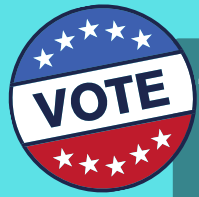
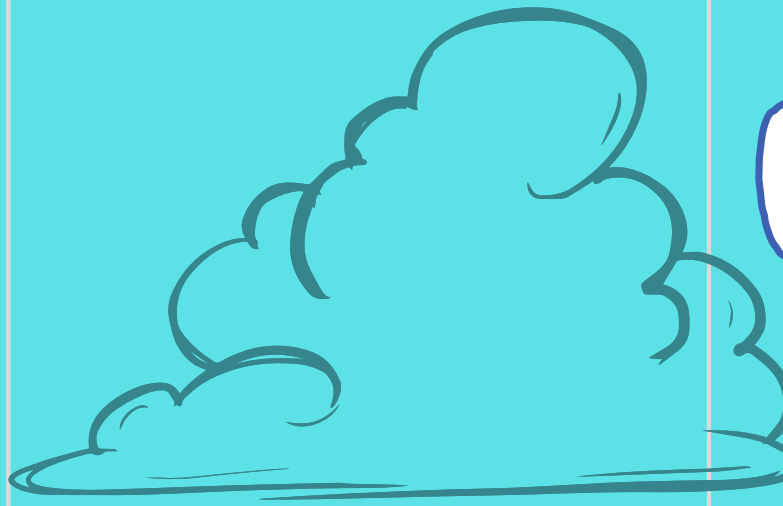
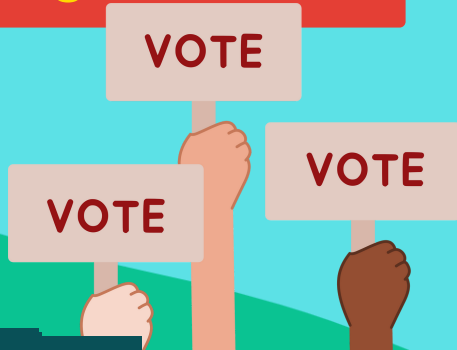


HOW DO I VOTE?



The election will take place **Tuesday, April 2nd** from 6am-7pm at St. Michael's Auditorium in Fredericktown, MO.

You can easily check that you are registered to vote or register at sos.mo.gov



MORE INFO

www.madisoncounttycc.com/use_tax

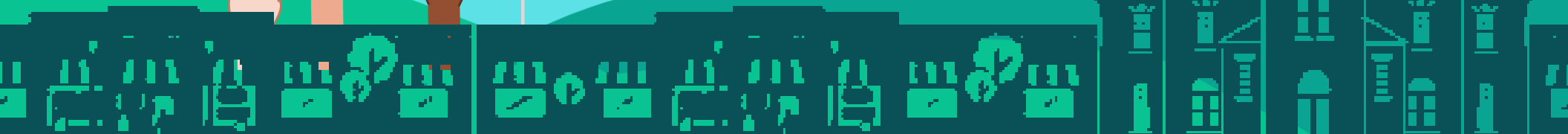


Paid for by Madison County Chamber of Commerce

USE TAX PROP U & PROP E-911



yes!





WHAT IS IT?

A way to collect existing sales tax on out-of-state (online/catalog) purchases delivered to Madison County and the City of Fredericktown.



LEVEL THE PLAYING FIELD

The Use Tax reduces the competitive advantage that online retailers have over local brick-and-mortar stores. This can help increase local sales and create more jobs!

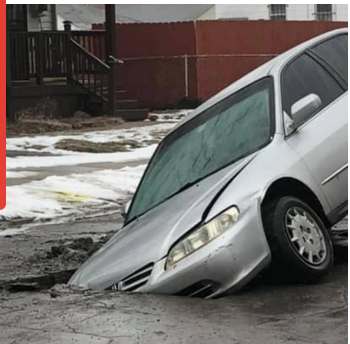


WHERE DOES THE MONEY GO?

City of Fredericktown

Infrastructure: Streets, curbs & bridges

City streets are in increasing disrepair and costs keep going up to fix them!



Madison County

Public Safety: Emergency 911

Madison County Emergency 911 is currently operating at a \$200,000.00 deficit!



IMPACT ON YOUR BUDGET

While it might add a small amount to some online purchases, its overall impact on an individual's budget is expected to be minimal, especially for those who primarily shop locally. It will have no effect on essential items like food, gas, utilities etc.

✓ APPLIES TO
NON ESSENTIAL ITEMS



✗ NOT AFFECTED
ESSENTIAL ITEMS

